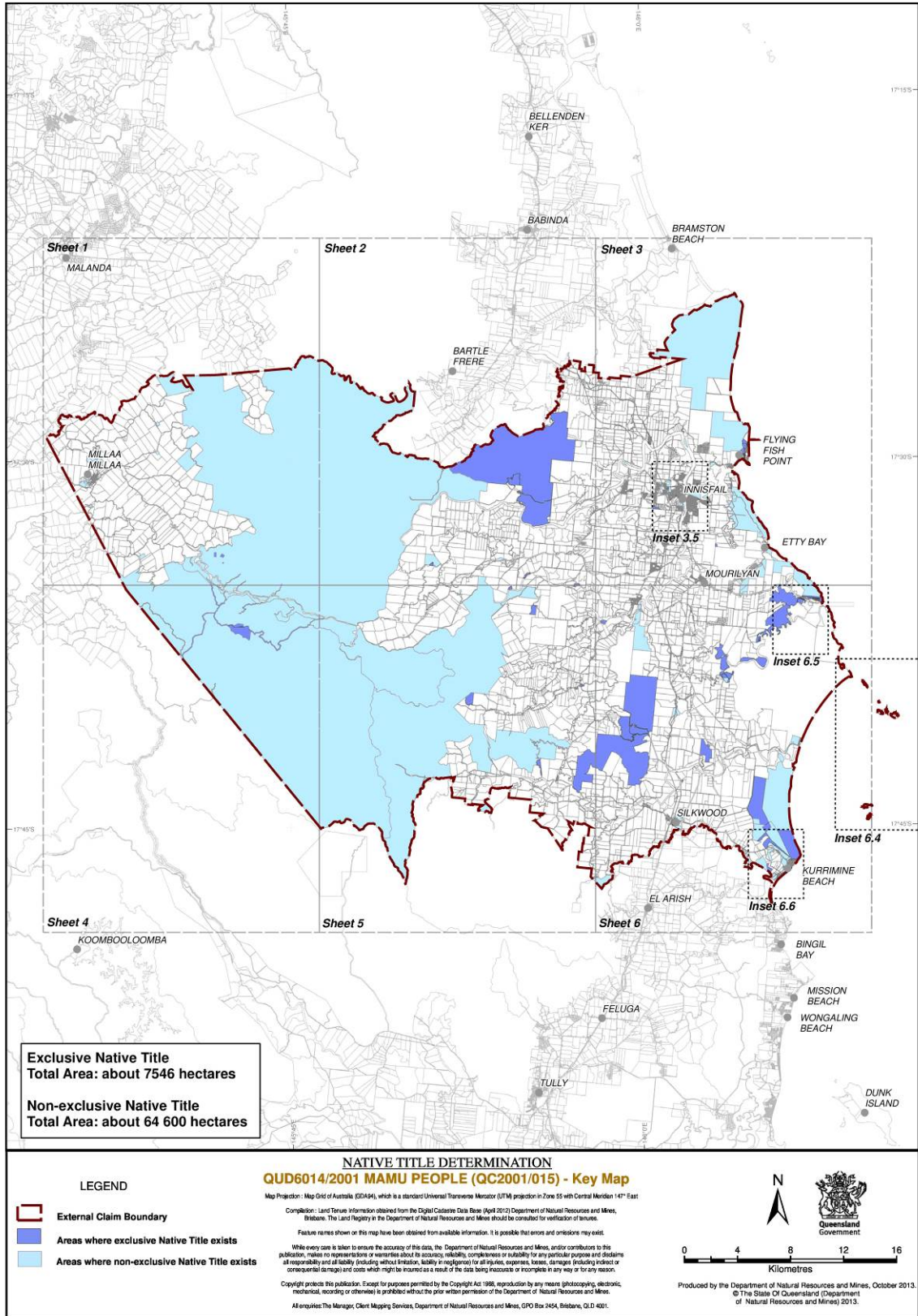
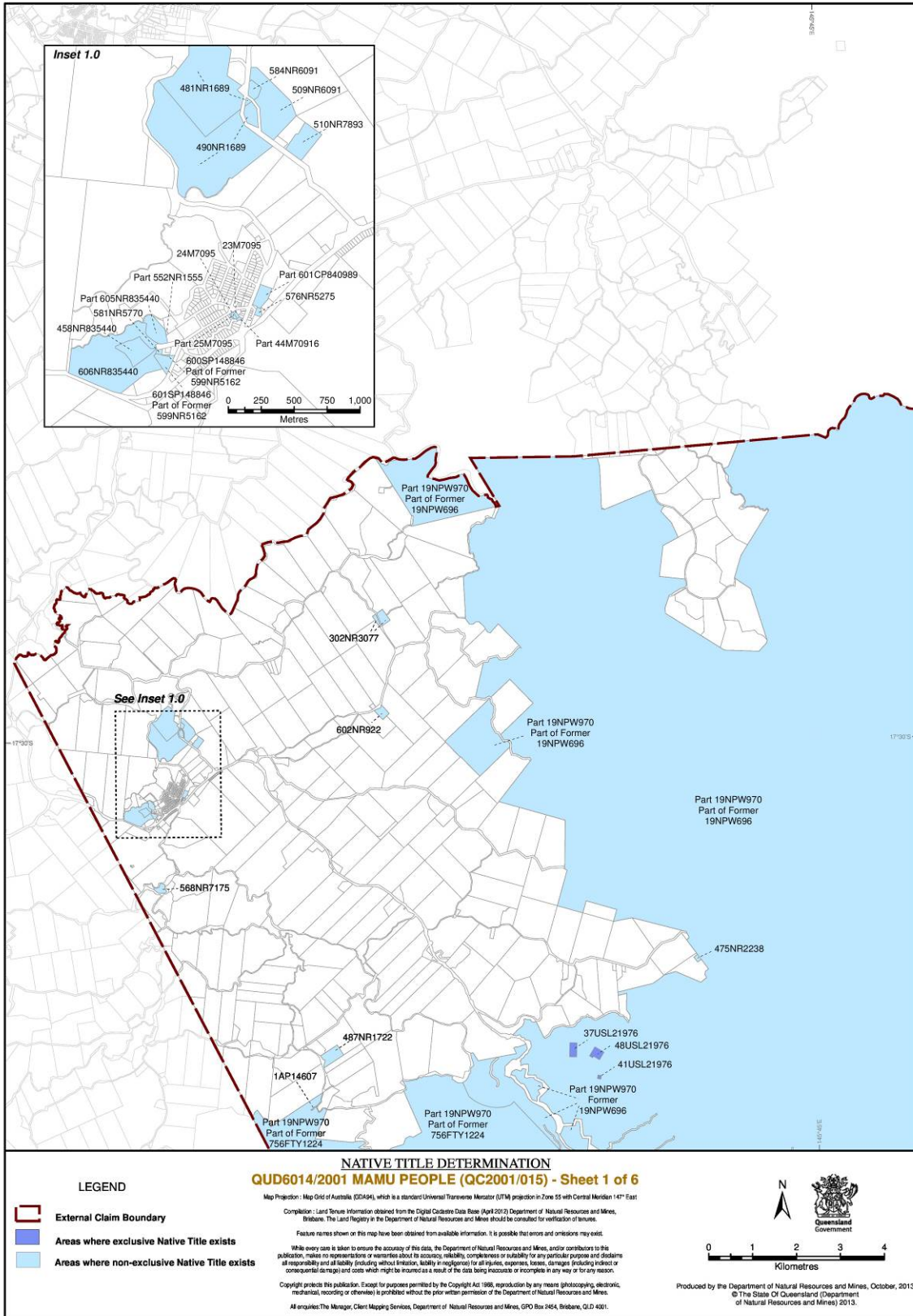


B. Map of Determination Area





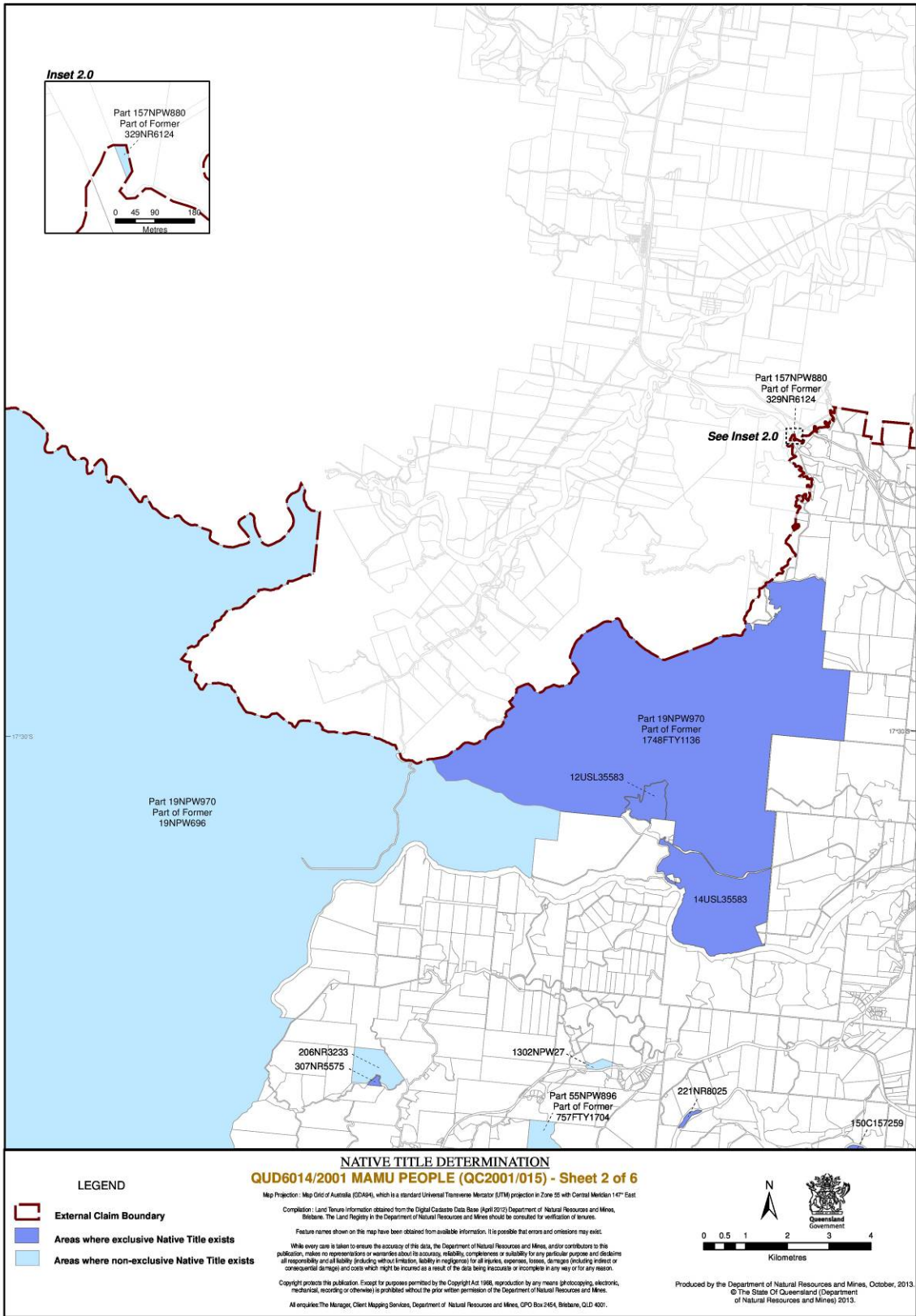
NATIVE TITLE DETERMINATION
QUD6014/2001 MAMU PEOPLE (QC2001/015) - Sheet 1 of 6

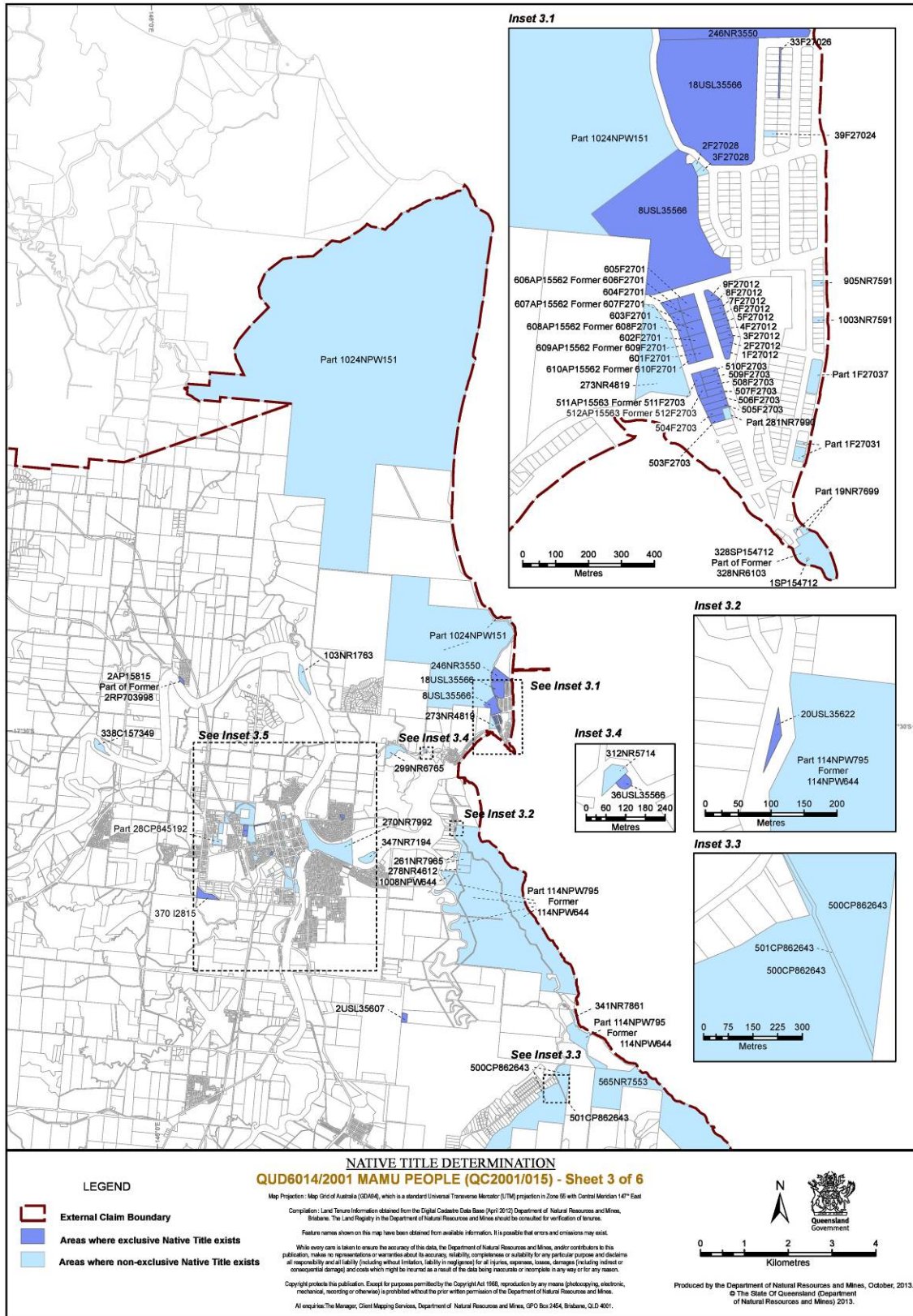
LEGEND

- External Claim Boundary
- Areas where exclusive Native Title exists
- Areas where non-exclusive Native Title exists

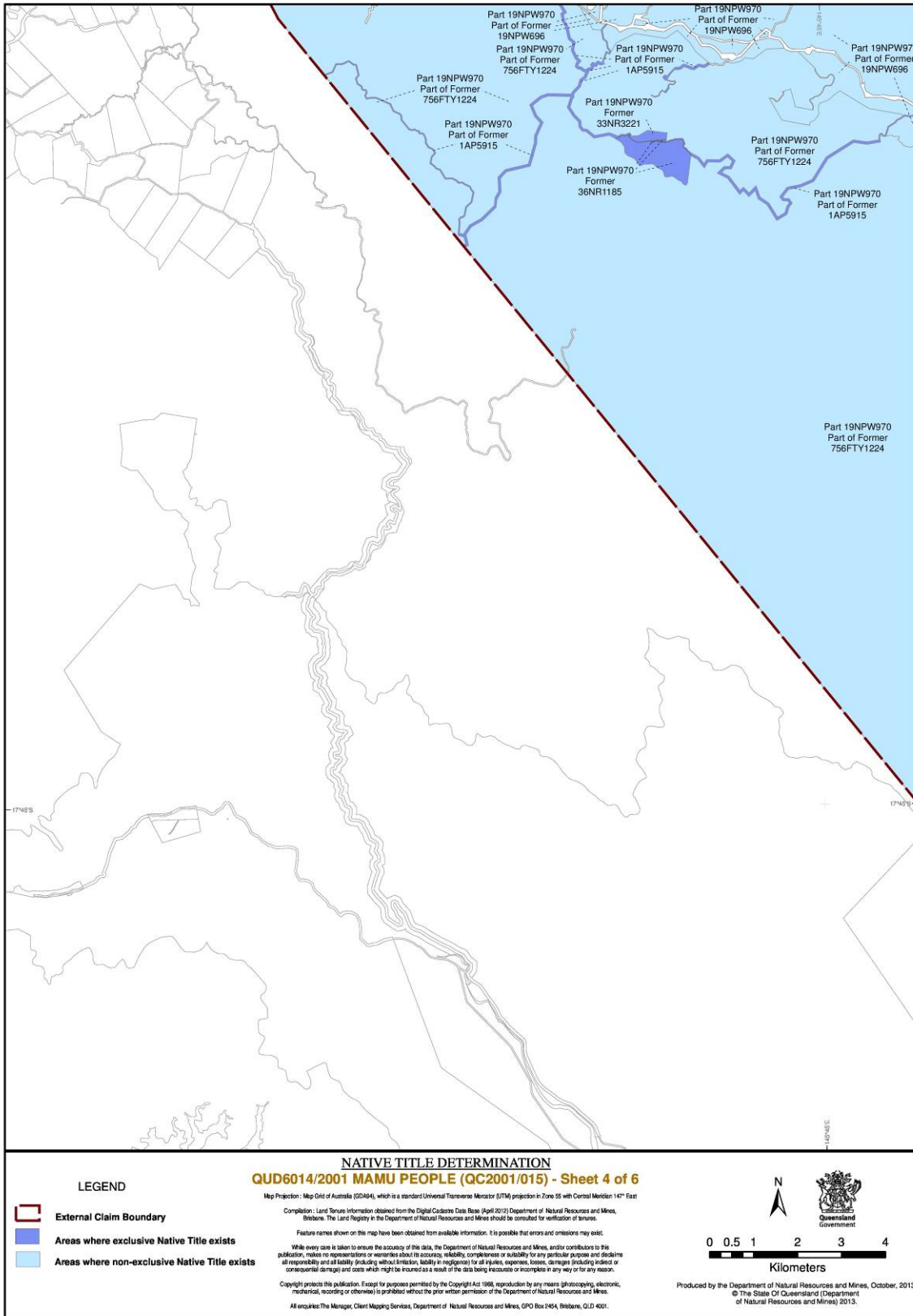
Map Projection: Map Grid of Australia (GDA94), which is a standard Universal Transverse Mercator (UTM) projection in Zone 55 with Central Meridian 147° East.
 Compilation: Land Tenure Information obtained from the Digital Cadastre Data Base (April 2012) by the Department of Natural Resources and Mines, Brisbane. The Land Registry in the Department of Natural Resources and Mines should be contacted for verification of issues.
 Feature names shown on this map have been obtained from available information. It is possible that errors and omissions may exist.
 While every care is taken to ensure the accuracy of this data, the Department of Natural Resources and Mines, and/or contributors to this publication, makes no representations or warranties about its accuracy, reliability, completeness or suitability for any particular purpose and disclaims all responsibility and liability (including without limitation, liability in negligence) for all injuries, expenses, losses, damages (including indirect or consequential damage) and costs which might be incurred as a result of the data being inaccurate or incomplete in any way or for any reason.
 Copyright protects this publication. Except for purposes permitted by the Copyright Act 1968, reproduction by any means (photocopying, electronic, mechanical, recording or otherwise) is prohibited without the prior written permission of the Department of Natural Resources and Mines.
 All enquiries: The Manager, Client Mapping Services, Department of Natural Resources and Mines, GPO Box 2464, Brisbane, QLD 4001.

Produced by the Department of Natural Resources and Mines, October, 2013.
 © The State Of Queensland (Department of Natural Resources and Mines) 2013.





File: C:\GIS\MapDocs\13\Main\Comms\Map_4\QC2001\015\Map_Determination_Map_20131026_01.mxd



NATIVE TITLE DETERMINATION
QUD6014/2001 MAMU PEOPLE (QC2001/015) - Sheet 4 of 6

Map Projection: Map Grid of Australia (GDA94), which is a standard Universal Transverse Mercator (UTM) projection in Zone 55 with Central Meridian 147° East

Compilation: Land Tenure Information obtained from the Digital Cadastre Data Base (April 2013) Department of Natural Resources and Mines, Brisbane. The Land Registry in the Department of Natural Resources and Mines should be consulted for verification of tenures.

Feature names shown on the map have been obtained from available information. It is possible that errors and omissions may exist.

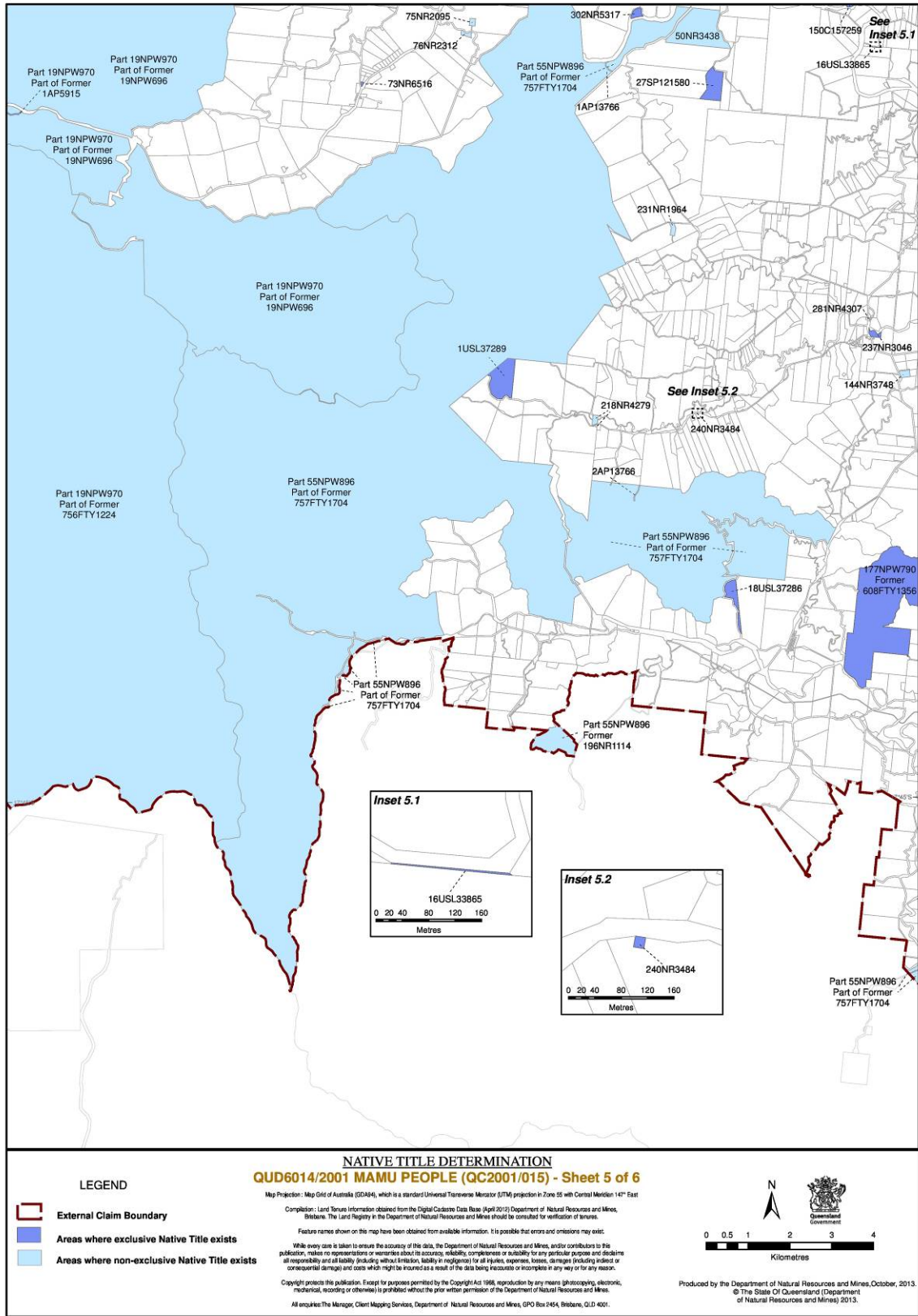
While every care is taken to ensure the accuracy of this data, the Department of Natural Resources and Mines, and/or contributors to this publication, makes no representations or warranties about its accuracy, reliability, completeness or suitability for any particular purpose and disclaims all responsibility and all liability (including without limitation, liability in negligence) for all injuries, expenses, losses, damages (including indirect or consequential damage) and costs which might be incurred as a result of the data being requested or incomplete in any way or for any reason.

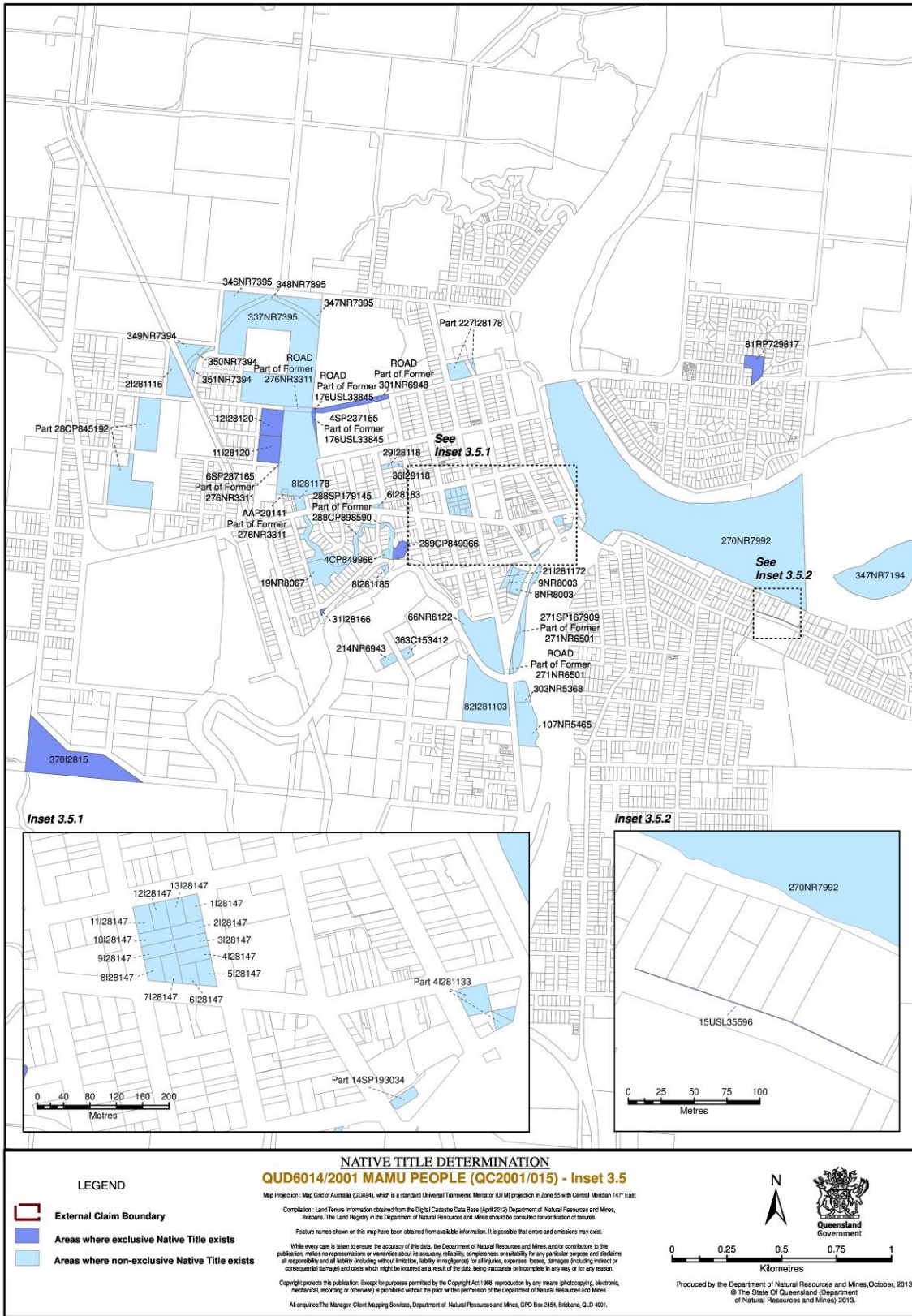
Copyright protects this publication. Except for purposes permitted by the Copyright Act 1969, reproduction by any means (photocopying, electronic, mechanical, recording or otherwise) is prohibited without the prior written permission of the Department of Natural Resources and Mines.

All enquiries The Manager, Client Mapping Services, Department of Natural Resources and Mines, GPO Box 2454, Brisbane, Q.L.D 4001.

Produced by the Department of Natural Resources and Mines, October, 2013
 © The State Of Queensland (Department of Natural Resources and Mines) 2013.

File: \\C:\Users\A\Documents\Map_A\p0013\Map\QCDetermination_Map_20131108_0800.mxd





NATIVE TITLE DETERMINATION
QUD6014/2001 MAMU PEOPLE (QC2001/015) - Inset 3.5

Map Projection: Map Grid of Australia (GDA94), which is a standard Universal Transverse Mercator (UTM) projection in Zone 55 with Central Meridian 147° East.

Compilation: Land Tenure Information obtained from the Digital Cadastre Data Base (April 2013), Department of Natural Resources and Mines, Brisbane. The Land Registry in the Department of Natural Resources and Mines should be consulted for verification of tenures.

Feature names shown on this map have been obtained from available information. It is possible that errors and omissions may exist.

While every care is taken to ensure the accuracy of this data, the Department of Natural Resources and Mines, and/or contributors to this publication, makes no representation or warranties about its accuracy, reliability, completeness or suitability for any particular purpose and disclaims all responsibility and all liability (including without limitation, liability in negligence) for all injuries, expenses, losses, damages (including indirect or consequential damage) and costs which might be incurred as a result of the data being inaccurate or incomplete in any way or for any reason.

Copyright protects this publication. Except for purposes permitted by the Copyright Act 1969, reproduction by any means (photocopying, electronic, mechanical, recording or otherwise) is prohibited without the prior written permission of the Department of Natural Resources and Mines.

All enquiries: The Manager, Client Mapping Services, Department of Natural Resources and Mines, GPO Box 2454, Brisbane, QLD 4001.

LEGEND

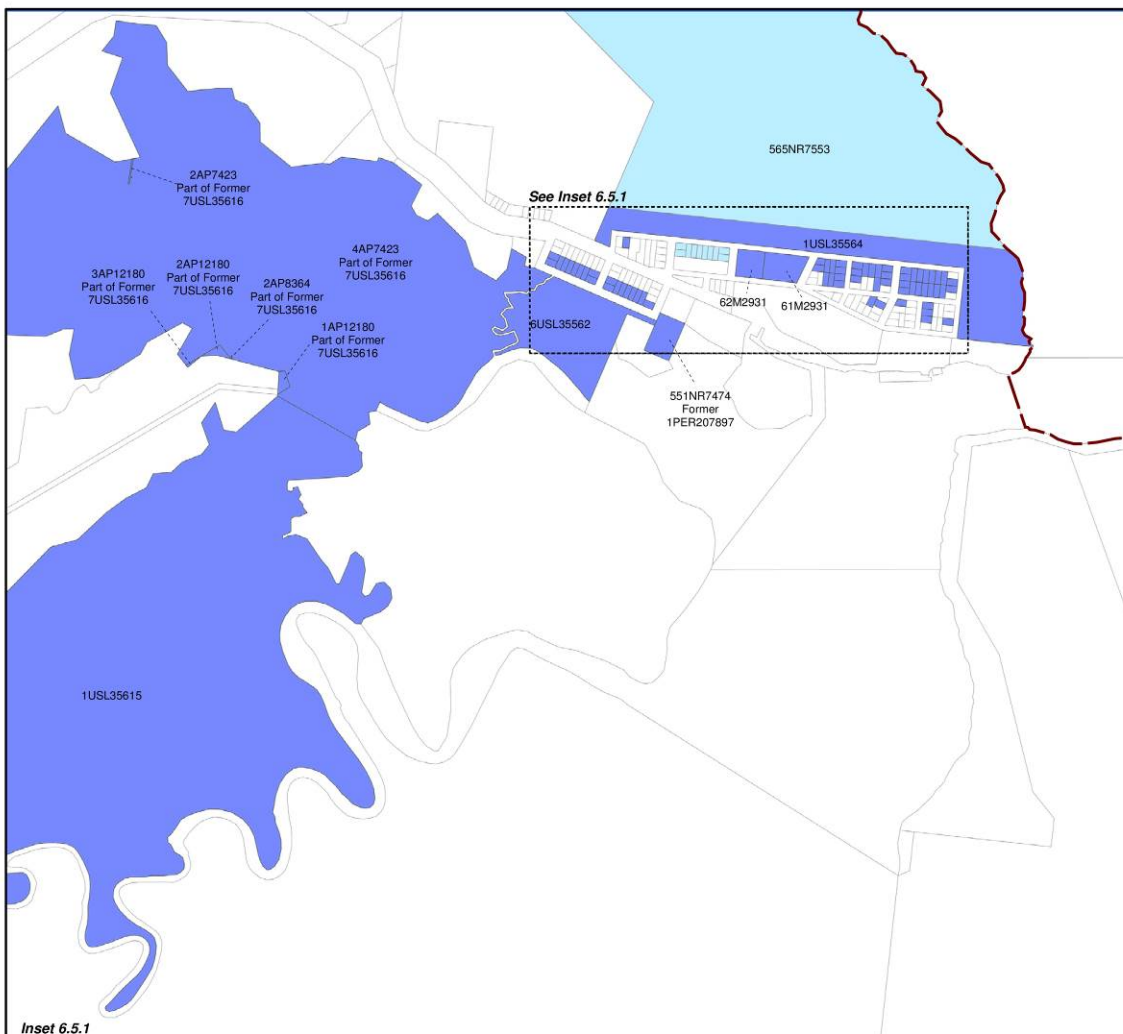
- External Claim Boundary
- Areas where exclusive Native Title exists
- Areas where non-exclusive Native Title exists

N

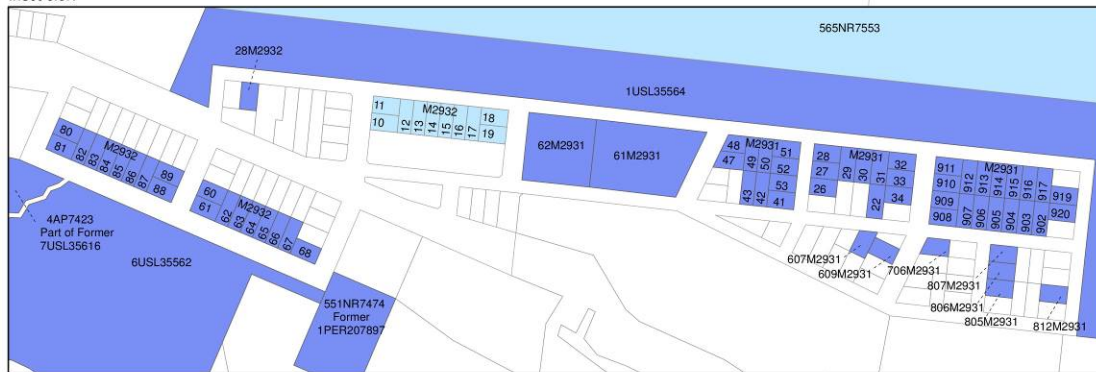
Queensland Government

0 0.25 0.5 0.75 1
Kilometres

Produced by the Department of Natural Resources and Mines, October, 2013.
 © The State Of Queensland (Department of Natural Resources and Mines) 2013.



Inset 6.5.1



NATIVE TITLE DETERMINATION
QUD6014/2001 MAMU PEOPLE (QC2001/015) - Inset 6.5

Map Projection: Map Grid of Australia (GDA94), which is a standard Universal Transverse Mercator (UTM) projection in Zone 55 with Central Meridian 147° East

Compilation: Land Tenure Information obtained from the Digital Cadastre Data Base (April 2012) Department of Natural Resources and Mines, Brisbane. The Land Registry in the Department of Natural Resources and Mines should be consulted for verification of tenures.

Feature names shown on this map have been obtained from available information. It is possible that errors and omissions may exist.


While every care is taken to ensure the accuracy of this data, the Department of Natural Resources and Mines, and/or contributors to this publication, makes no representations or warranties about its accuracy, reliability, completeness or suitability for any particular purpose and disclaims all responsibility and all liability (including without limitation, liability in negligence) for all injuries, expenses, losses, damages (including indirect or consequential damage) and costs which might be incurred as a result of the data being inaccurate or incomplete in any way or for any reason.

Copyright protects this publication. Except for purposes permitted by the Copyright Act 1968, reproduction by any means (photocopying, electronic, mechanical, recording or otherwise) is prohibited without the prior written permission of the Department of Natural Resources and Mines.

All enquiries The Manager, Client Mapping Services, Department of Natural Resources and Mines, GPO Box 2454, Brisbane, QLD 4001.

LEGEND

- External Claim Boundary
- Areas where exclusive Native Title exists
- Areas where non-exclusive Native Title exists



0 125 250 500 750 1,000
Meters

Produced by the Department of Natural Resources and Mines, October, 2013.
 © The State Of Queensland (Department of Natural Resources and Mines) 2013.

File: K:\CC\AMM\QCD_13\Map\QCDetermination_Map_Ap0013\QCDetermination_Map\Map\Map_20131002_1.mxd

